

This presentation has been modified to illustrate the topics that were discussed at the meeting. This presentation is intended to supplement discussion of board items and is not the approved agenda, staff report, or meeting minutes.





South Indian River
Water Control District™

ATTENTION AUDIENCE

- ❖ Tonight's meeting contains two meetings: **Monthly Board Meeting and the Annual Landowner Meeting**
- ❖ Please make sure you sign in at the table.
- ❖ The Monthly Board Meeting will be conducted **only to approve the warrant list**
- ❖ Landowner's will be given an opportunity to comment and ask questions after each of the Annual Reports given by staff
- ❖ If you would like to comment on Item 7, General Discussion,
PLEASE FILL OUT A COMMENT CARD.
- ❖ Depending on the number of comment cards received, will determine the amount of time you are allowed speak.
The Chairperson will determine the time allowed to speak.
- ❖ At 8:40 pm, the meeting will end. We must be out of the space at 9:00 pm
- ❖ **Thank you for your patience!**



South Indian River
Water Control District™



Board of Supervisors Monthly Meeting

September 15, 2016

Agenda

1. Call to Order
2. Pledge of Allegiance
3. Consent Agenda
 - a) Approval of Warrant List
4. Adjourn



South Indian River
Water Control District™



South Indian River
Water Control District™



Annual Landowner's Meeting

September 15, 2016

Agenda

1. Call to Order
2. Election of Officers for the Meeting
 - a) Chairman
 - b) Secretary
3. Approval of Minutes of 2015 Annual Meeting
4. Election of Supervisors
 - a) Nominations
 - b) Motion to Close Nominations
 - c) Voting for Candidates and Closing of Balloting



5. Annual Reports

- a) Treasurer's Report
- b) Engineer's Report
- c) Manager of Operations Report



South Indian River
Water Control District™

Annual Treasurer's Report



Presented by Chuck Haas, Treasurer

SIRWCD Background Information

- ❖ Uses Assessments to Finance it's Programs
- ❖ Contains Approx. 12,500 acres with 11,089 acres being assessed
- ❖ Created Under Chapter 298 FS and Chapter 2001-313 Laws of Florida
- ❖ Maintains Water Control and Road Maintenance for Jupiter Farms, Egret Landing, and Jupiter Park of Commerce
- ❖ Maintains Water Control and Road and Park Maintenance for Palm Beach Country Estates (PBCE)



South Indian River
Water Control District™

SIRWCD Complies with:

- ❖ Section 11.45 and Chapter 218, FS prescribing a Uniform Chart of Accounts and Uniform Fiscal Year
- ❖ With the Florida Auditor General by filing an Annual Audited Financial Statement (Chapter 218.39, FS)
- ❖ With the Florida Department of Financial Services by filing an Annual Financial Report
- ❖ Filing a Public Depositor Annual Report to the Florida Chief Financial Officer



South Indian River
Water Control District™

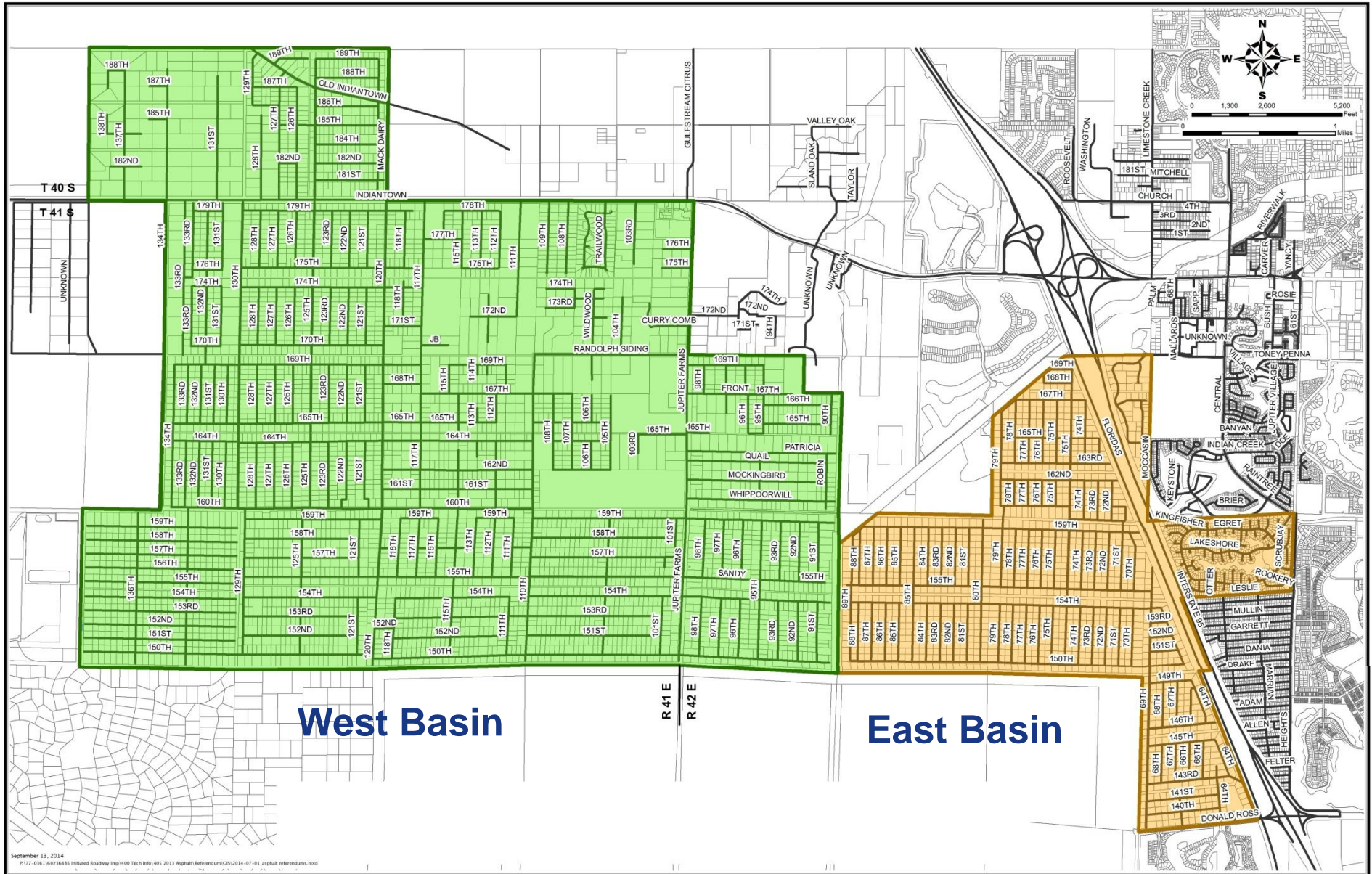
SIRWCD Complies with: (cont.)

- ❖ The Local Governmental Entity ..Financial Emergencies Act (Chapter 218, FS)
- ❖ The Uniform Special District Accountability Act (Chapter 189, FS)
- ❖ Chapter 197, Florida Statutes - Tax Collections, Sales, and Liens

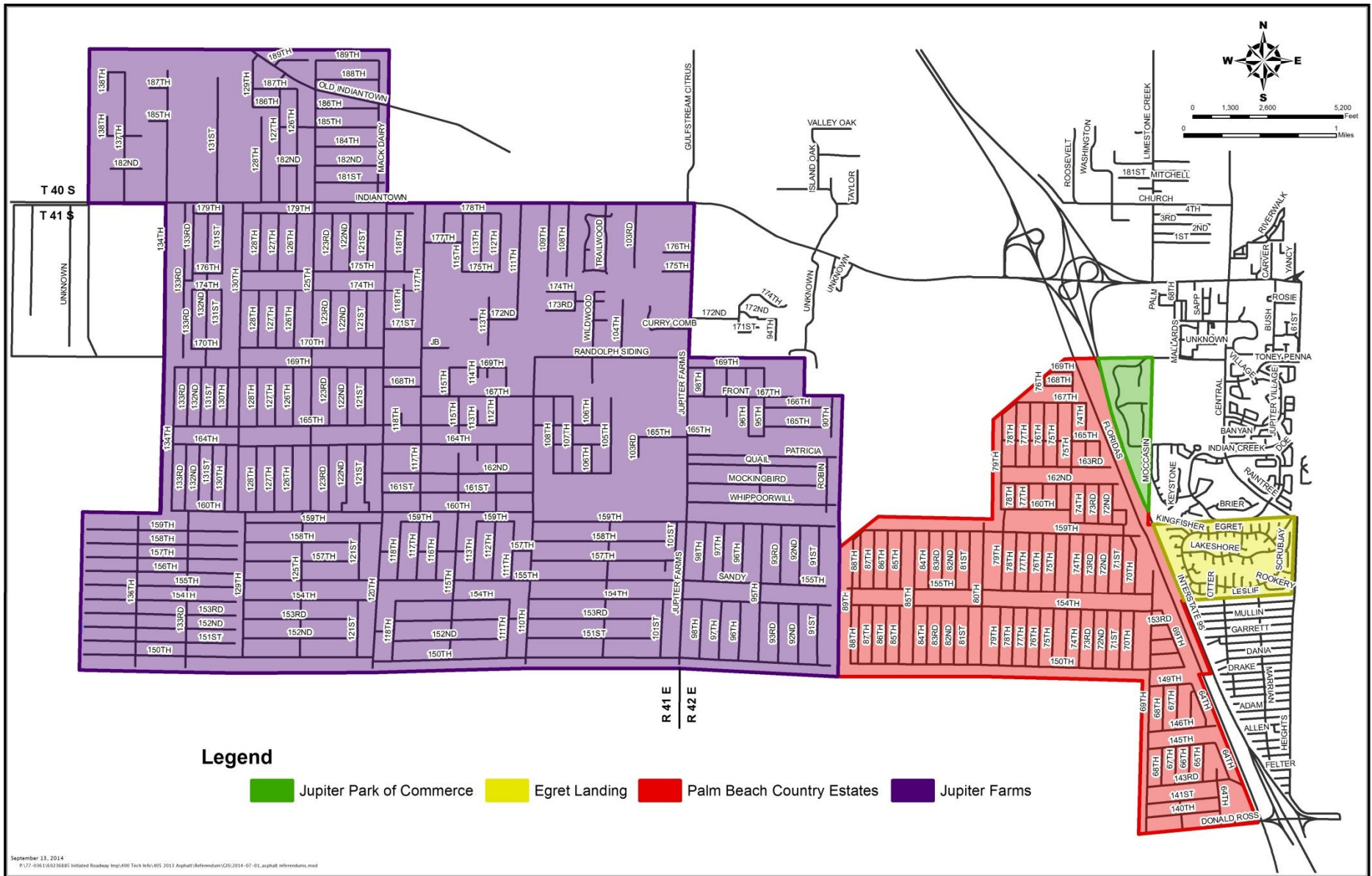


South Indian River
Water Control District™

Water Control



Road and Park Maintenance



September 13, 2014
 P:\17-0361\60236881\Initiated Roadway Imp\600 Tech Info\405 2013 Asphalt\Referendum\GIS\2014-07-01_asphalt_referendums.mxd

SOUTH INDIAN RIVER WATER CONTROL DISTRICT

Governmental Funds

Combined Statement of Revenues, Expenditures and Changes in Fund Balances for Fiscal Year Ending September 30, 2015

| | | |
|--|----|---------------|
| Total revenues | \$ | 5,175,332 |
| Total other financing sources | | 201,550 |
| Total revenues and other financing sources | | 5,376,882 |
| Total expenditures | | 5,662,484 |
| Deficiency of revenues and other financing sources under expenditures | | (285,602) |
| Fund balances, beginning of year | | 3,612,453 |
| Fund balances, September 30, 2015 | \$ | 3,326,851 |



SOUTH INDIAN RIVER WATER CONTROL DISTRICT

Governmental Funds

Combined Statement of Revenues, Expenditures and Changes in Fund Balances for Fiscal Year Ending

September 30, 2015

Revenues Detailed

| | |
|--|----------------------------|
| Revenues: | |
| Assessments | \$ 5,063,071 |
| Charges for services | 340 |
| Reimbursement of connections fees | 85,335 |
| Investment income | 8,276 |
| Miscellaneous | 18,310 |
| Total revenues | <u>5,175,332</u> |
| Other financing sources (uses): | |
| Transfers (net) | <u>201,550</u> |
| Total other financing sources | <u>201,550</u> |
| Total revenues and other financing sources | <u><u>\$ 5,376,882</u></u> |



South Indian River
Water Control District™

SOUTH INDIAN RIVER WATER CONTROL DISTRICT

Governmental Funds

Combined Statement of Revenues, Expenditures and Changes in Fund Balances for Fiscal Year Ending

September 30, 2015

Expenditures Detailed

| | |
|----------------------|------------------|
| Expenditures: | |
| Current: | |
| Water control | 1,129,877 |
| Road maintenance | 939,918 |
| Park maintenance | 10,588 |
| Capital outlay | |
| Water control | 281,364 |
| Road improvements | 211,435 |
| Park improvements | 289,430 |
| Debt service: | |
| Principal retirement | 1,688,298 |
| Interest | 1,023,490 |
| Total expenditures | <u>5,662,484</u> |



South Indian River
Water Control District™

SOUTH INDIAN RIVER WATER CONTROL DISTRICT

Governmental Funds

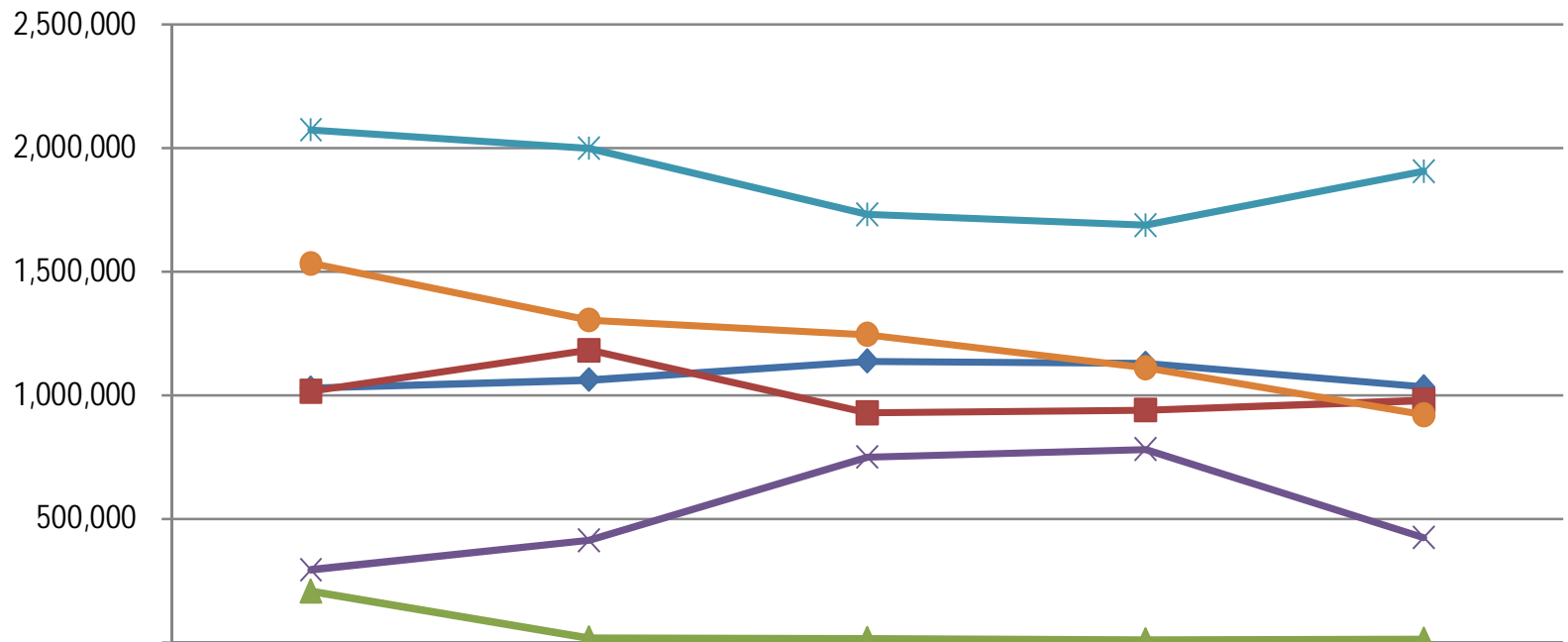
Combined Statement of Revenues, Expenditures and Changes in Fund Balances for Fiscal Year Ending September 30, 2015

Fund Balance Detailed

| | |
|---|--------------|
| Total revenues | \$ 5,175,332 |
| Total other financing sources | 201,550 |
| Total revenues and other financing sources | 5,376,882 |
| Total expenditures | 5,662,484 |
| Deficiency of revenues and other financing sources under expenditures | (285,602) |
| Fund balances, beginning of year | 3,612,453 |
| Fund balances, September 30, 2015 | \$ 3,326,851 |
| Restricted for debt service | 1,063,490 |
| Restricted for future construction | 470,624 |
| Committed for renewal and replacement | 238,843 |
| Assigned for subsequentt year operations | 1,553,894 |
| Total fund balances | \$ 3,326,851 |



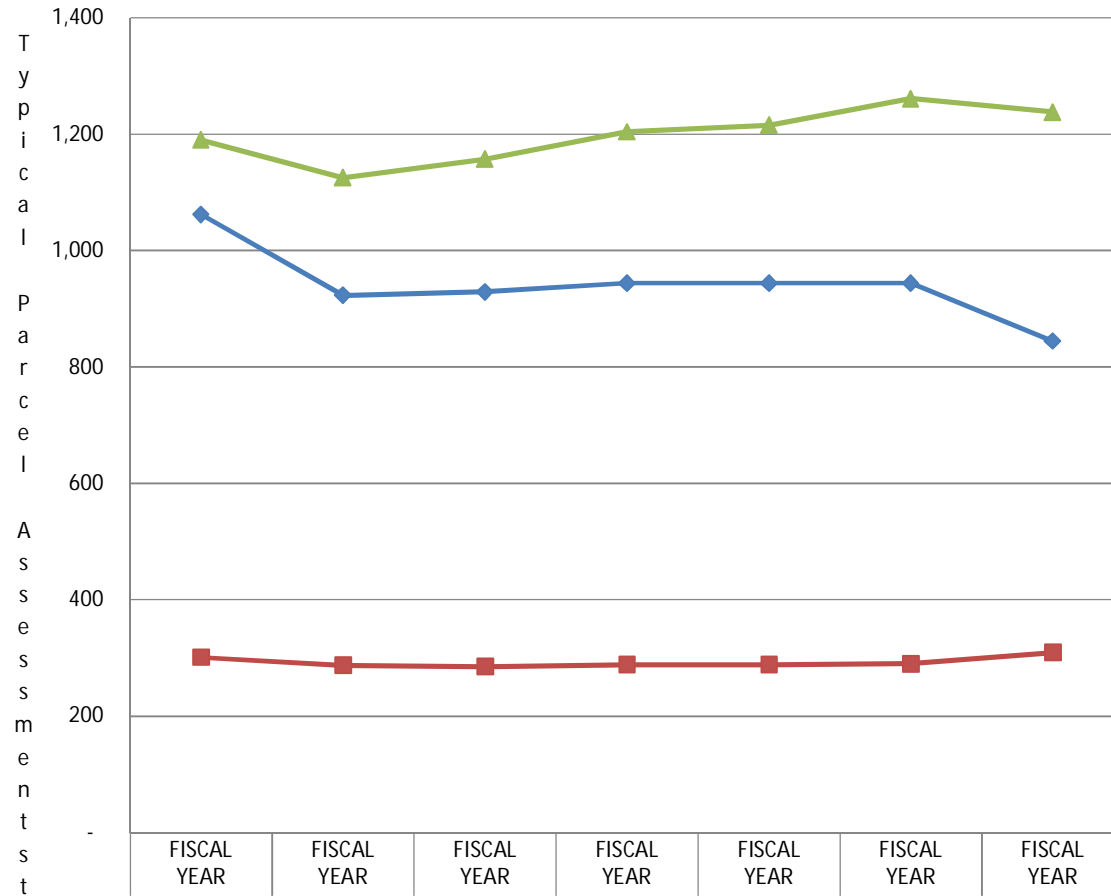
Expenditure History



| | 2011/12 | 2012/13 | 2013/14 | 2014/15 | 2015/16 (Estimated) |
|-----------------------------|-----------|-----------|-----------|-----------|------------------------|
| ◆ Canal Maintenance | 1,028,906 | 1,062,179 | 1,138,276 | 1,129,877 | 1,034,384 |
| ■ Road Maintenance | 1,016,213 | 1,182,019 | 929,726 | 939,918 | 980,149 |
| ▲ Park Maintenance | 208,243 | 17,549 | 15,817 | 10,588 | 13,120 |
| ✕ Capital Outlay | 293,975 | 413,250 | 749,561 | 782,229 | 425,000 |
| * Principal (scheduled) | 2,073,582 | 1,998,665 | 1,731,880 | 1,688,298 | 1,906,480 |
| ● Interest & Fiscal Changes | 1,534,078 | 1,304,290 | 1,246,336 | 1,111,574 | 921,269 |

History of Assessments-Selected Areas

South Indian River Water Control District
History of Assessments- Selected Neighborhoods



| | FISCAL YEAR | FISCAL YEAR | FISCAL YEAR | FISCAL YEAR | FISCAL YEAR | FISCAL YEAR | FISCAL YEAR |
|-----------------|-------------|-------------|-------------|-------------|-------------|-------------|------------------|
| | 10-11 | 11-12 | 12-13 | 13-14 | 14-15 | 15-16 | 16-17 (Proposed) |
| ▲ PBCE | 1,190 | 1,125 | 1,157 | 1,204 | 1,215 | 1,261 | 1,238 |
| ◆ Egret Landing | 1,062 | 923 | 929 | 944 | 944 | 944 | 844 |
| ■ Jupiter Farms | 301 | 287 | 285 | 288 | 288 | 290 | 309 |



South Indian River
Water Control District™

Public Comment or Questions



South Indian River
Water Control District™

September 15, 2016

www.sirwcd.org

Annual Engineer's Report



**Presented by Amy Eason, PE
District Engineer**

District Engineer's Statement

- ❖ To the best of my knowledge and belief, the District is in compliance with all regulatory requirements that affect works of the District and their operation.
- ❖ The works of the District continue to be operated and maintained in a manner that achieves the available level of service.
- ❖ The annual report of the Operations Manager has been included as an appendix to the 2016 written report.



2016 Annual Report

- ❖ Capital Improvements
- ❖ Resource Regulations
- ❖ Intergovernmental Coordination
- ❖ Operations & Maintenance



AECOM

September 15, 2016

South Indian River Water Control District
District Engineer's
Annual Report

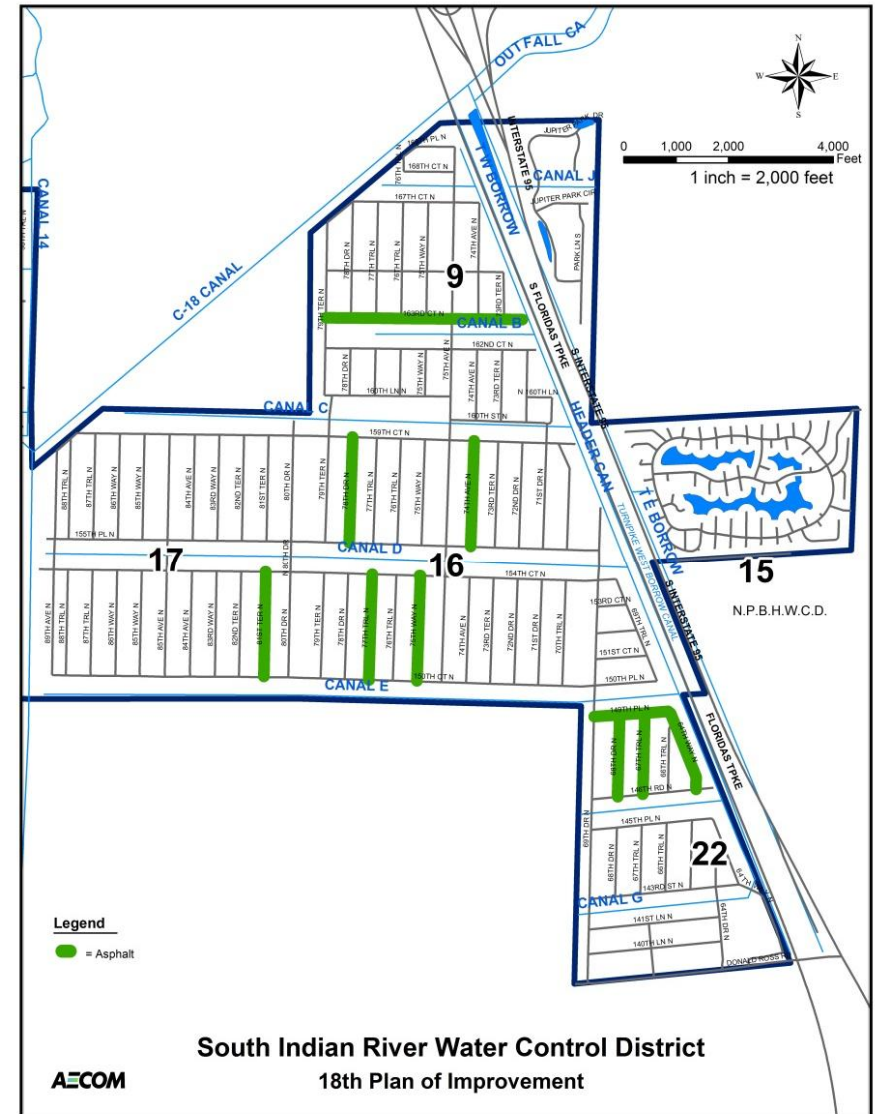


Capital Improvements 18th Plan of Improvements

- ❖ Approximately 3.8 miles
- ❖ Approximately 166 assessable lots
- ❖ Total Estimated Construction Costs = \$1,463,000
- ❖ Estimate Financing = \$1,150 per year for 10 years
- ❖ Payout per lot \$8,813
- ❖ Contract Awarded to Hardrives (\$1,337,841.95)
- ❖ Anticipated Start Date = October 1, 2016



South Indian River
Water Control District™



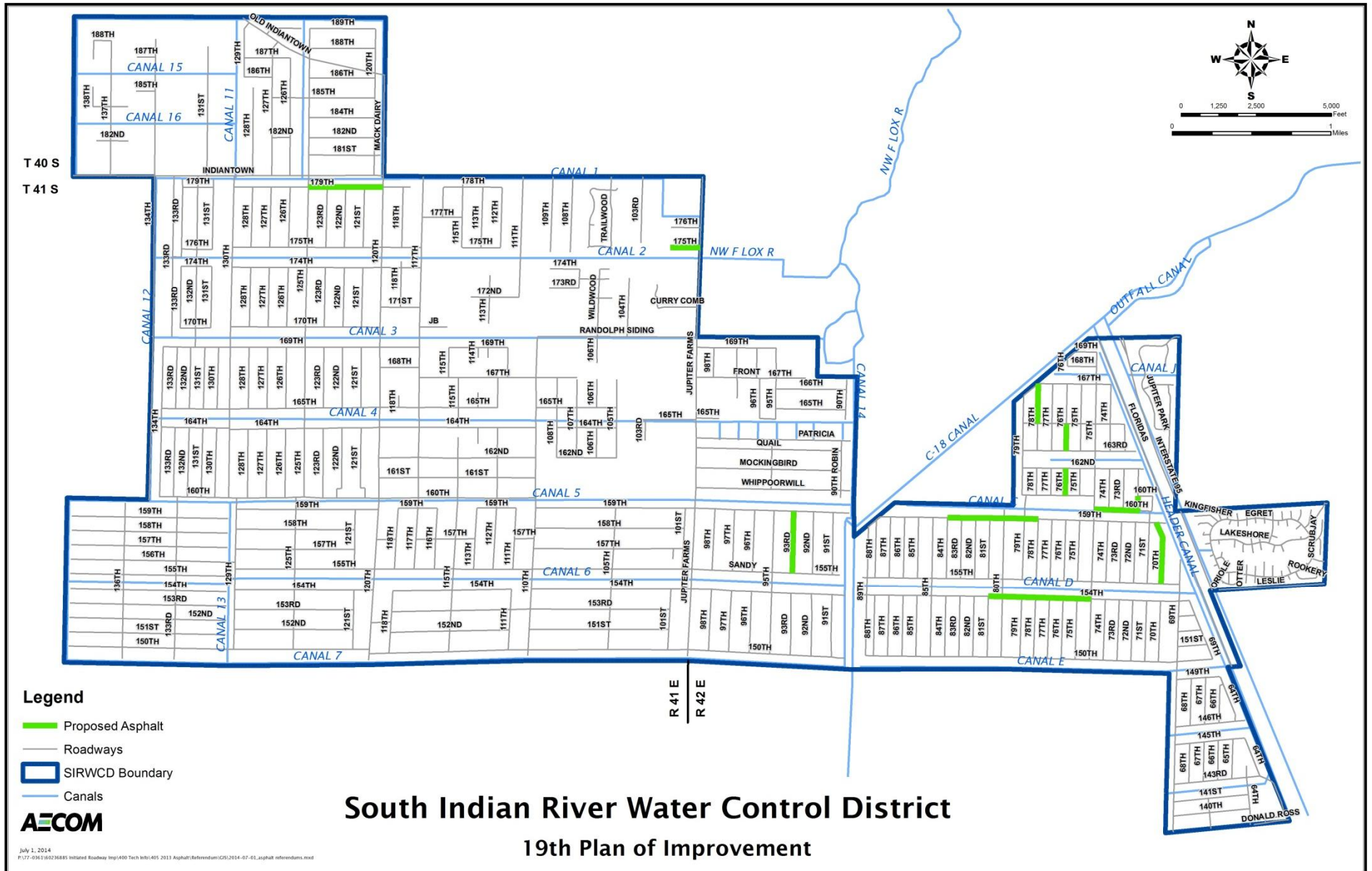
Capital Improvements

Proposed 19th Plan of Improvements

- ❖ 70th Trail N. between 155th Place N. and 159nd Court N.
- ❖ 76th Trail N. between 160th Lane N. and 162nd Court N.
- ❖ 76th Trail N. between 163rd Court N. and 165th Street N.
- ❖ 78th Drive N. between 165th Street N. and 167th Court N.
- ❖ 93rd Lane N. between 155th N. and 159th Court N.
- ❖ 154thCourt N. between 75th Ave. and 81st Court N.
- ❖ 159th Court N. between 78th Terrace N. to 84th Avenue N.
- ❖ 160th Street N. between 75th Ave. N. and 72th Drive N. and 75th Ave. and 72nd Drive N. from 160th Street N. to 160th Lane N.
- ❖ 175th Road N. between Jupiter Farms Road and West End
- ❖ 179th Court N. between Mellen Lane N. and Alexander Run



Proposed 19th Plan of Improvements



July 1, 2014
P:\17-0161\002\6885 Inlined Roadway\map\400 Tech\tbl\401 2013 Asphalt\referendum\GIS\2014-07-01 Asphalt referendums.mxd

Capital Improvements

Propose 19th Plan of Improvements

- ❖ Approximately 3.6 miles
- ❖ Estimating \$470,000 per mile
- ❖ Approximately 152 assessable lots with 24 corner lots from a previous Plan of Improvement
- ❖ Total Estimated Construction Costs = \$1,692,000
- ❖ Estimate Financing = \$1,575 per year for 10 years
- ❖ Payout per lot \$10,317
- ❖ Anticipated Referendum Mailed to Landowners = October 17, 2016 with deadline to return ballots on December 9, 2016



South Indian River
Water Control District™

AECOM

Resource Regulations

- ❖ National Pollutant Discharge Elimination System (NPDES)
- ❖ Waters of the United States (WOTUS) Rule



Resource Regulations and Intergovernmental Coordination

| | |
|--|---|
| U.S. Environmental Protection Agency (EPA) | Treasure Coast Regional Planning Council |
| U.S. Army Corps of Engineers (USACE) | Seacoast Utility Authority |
| Florida Fish & Wildlife Conservation Commission | Loxahatchee River Management Coordinating Council |
| Florida Department of Environmental Protection (FDEP) | Loxahatchee River Ecosystem Management Area |
| Florida Department of Community Affairs | Jupiter Inlet District |
| Florida Department of Transportation (FDOT) | Indian Trail Improvement District |
| South Florida Water Management District (SFWMD) | City of Palm Beach Gardens |
| Loxahatchee River Environmental Control District | Martin County |
| Palm Beach County | U.S. Geological Survey (USGS) |
| Town of Jupiter | City of West Palm Beach |
| Northern Palm Beach County Improvement District (NPBCID) | U.S. Fish & Wildlife Service |
| Solid Waste Authority of Palm Beach County (SWA) | Numerous Citizen Interest Groups and Committees |



South Indian River
Water Control District™

AECOM

Intergovernmental Coordination

- ❖ Loxahatchee River Management Coordinating Council (LRMCC)
- ❖ Loxahatchee River Preservation Initiative (LRPI)
- ❖ South Florida Water Management District (SFWMD) Everglades Restoration Strategies
- ❖ Loxahatchee River Watershed Restoration Project



South Indian River
Water Control District™

AECOM

September 15, 2016

www.sirwcd.org

Operation & Maintenance

- ❖ SIRWCD continuously maintains over 60 miles of canal and 189 miles of roadway
- ❖ On-going swale maintenance program allows Operations Manager & Engineer to identify areas to be improved for conveyance and storage



Operation & Maintenance

- ❖ 128th Trail N. Drainage Improvement Project
- ❖ Culvert Replacement Program
- ❖ Culvert Installation in Canal 6 and Canal 8
- ❖ Reese Bridge



South Indian River
Water Control District™

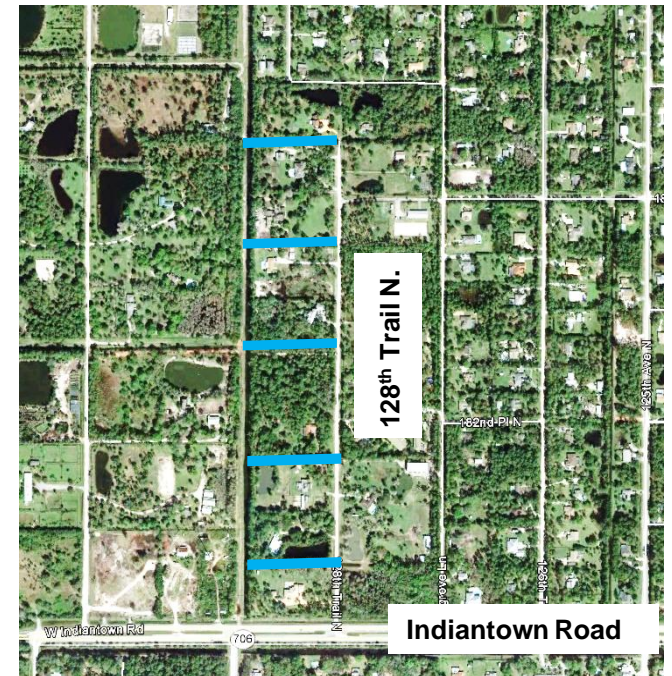
AECOM

September 15, 2016

www.sirwcd.org

Operation & Maintenance Facility Improvements 128th Trail N. Drainage Improvement Project

- ❖ Cleared ancillary ditches
- ❖ Replaced failing cross drains
- ❖ Installing roadside swales
- ❖ Working with landowners on driveway culverts



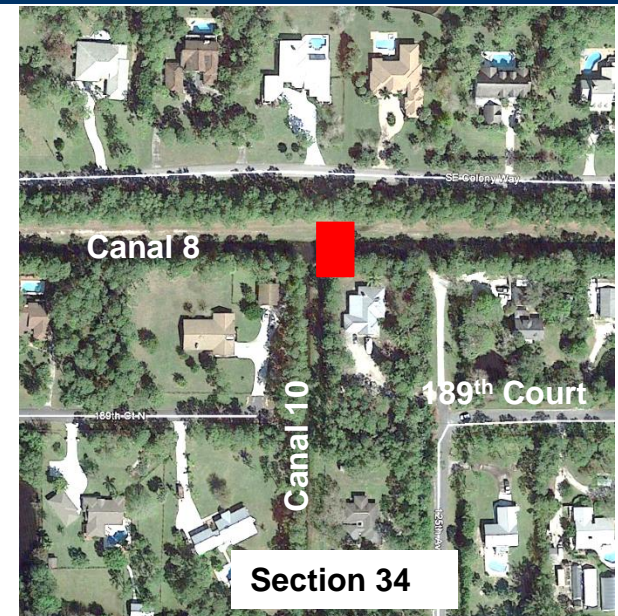
Operation & Maintenance Facility Improvements Culvert Replacement Program

- ❖ Aging Driveway Culverts
- ❖ Culverts are the landowner's responsibility
- ❖ Inspection
- ❖ Working with landowners on replacement



Operation & Maintenance Facility Improvements Culvert Installation in Canal 6 and 8

- ❖ Canal 6 – 72” CMP
- ❖ Canal 8 – 48” CMP
- ❖ Estimated Construction = \$78,000



Operation & Maintenance Facility Improvements Reese Bridge

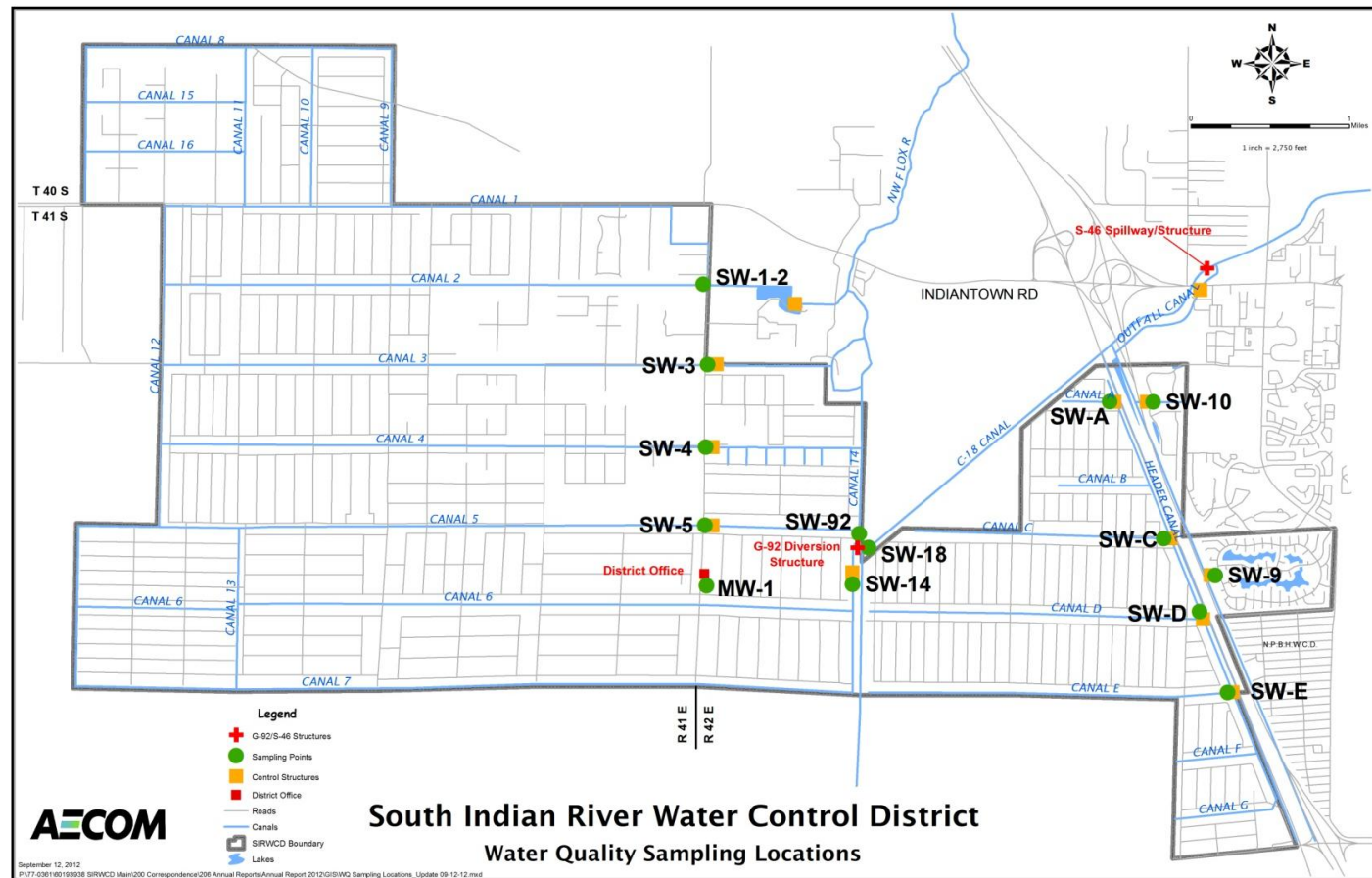
- ❖ Owned by SFWMD
- ❖ SIRWCD to take over
Operation and Maintenance
- ❖ Equipment Access for Palm
Beach Country Estates
- ❖ Transfer Permit to SIRWCD
- ❖ Restore bridge
- ❖ Approx. cost = \$53,566
- ❖ Construction Completed =
August 2016



South Indian River
Water Control District™

Operation & Maintenance

Water Quality Sampling



Operation & Maintenance

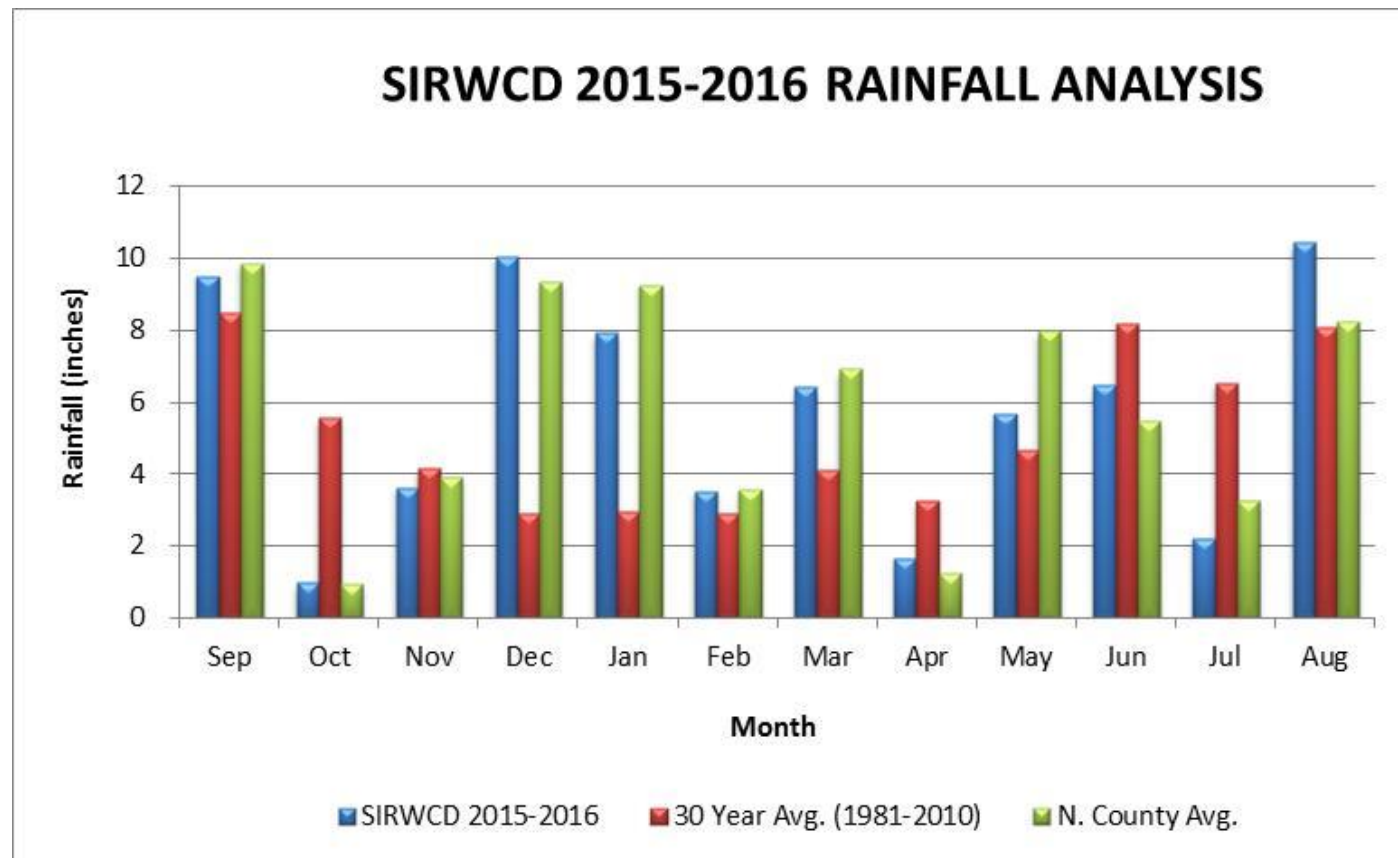
2015-2016 Rainfall

- ❖ Average annual rainfall for SIRWCD = 65 inches
- ❖ Cumulative Rainfall = approximately 68 inches



Operation & Maintenance

2015-2016 Rainfall



South Indian River
Water Control District™

AECOM

Operation & Maintenance Level of Service

Design Storms

- < 10 year, 1-day
- > 10 year, 1-day
- 100 year, 3 day



Dry House Pad

Road Storage

Swale Storage

Public Comment or Questions



Annual Manager of Operations Report



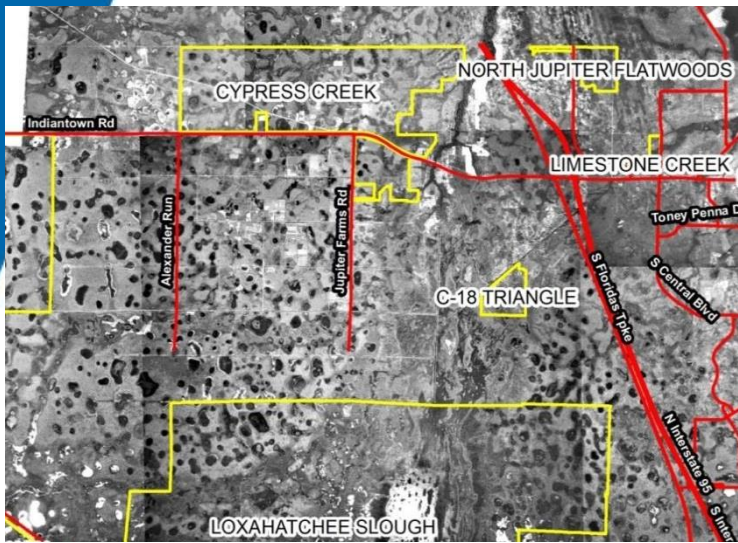
**Presented by Mike Dillon
Manager of Operations**



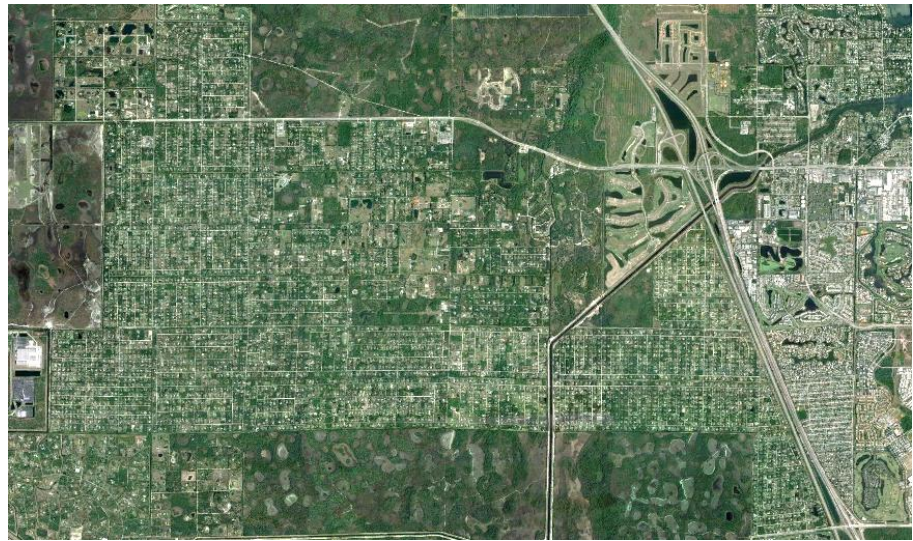
Roadway Maintenance



Drainage



THEN - 1940s



NOW - 2016



South Indian River
Water Control District™

Culvert Replacement Program



Public Comment or Questions



South Indian River
Water Control District™

September 15, 2016

www.sirwcd.org

6. Compensation of Supervisors

Current Compensation

The landowners of the District have authorized the Board members to be reimbursed at the rate of \$50.00 per day to a maximum of \$550 per month.



7. General Discussion



South Indian River
Water Control District™

September 15, 2016

www.sirwcd.org

8. Adjourn



South Indian River
Water Control District™

September 15, 2016

www.sirwcd.org